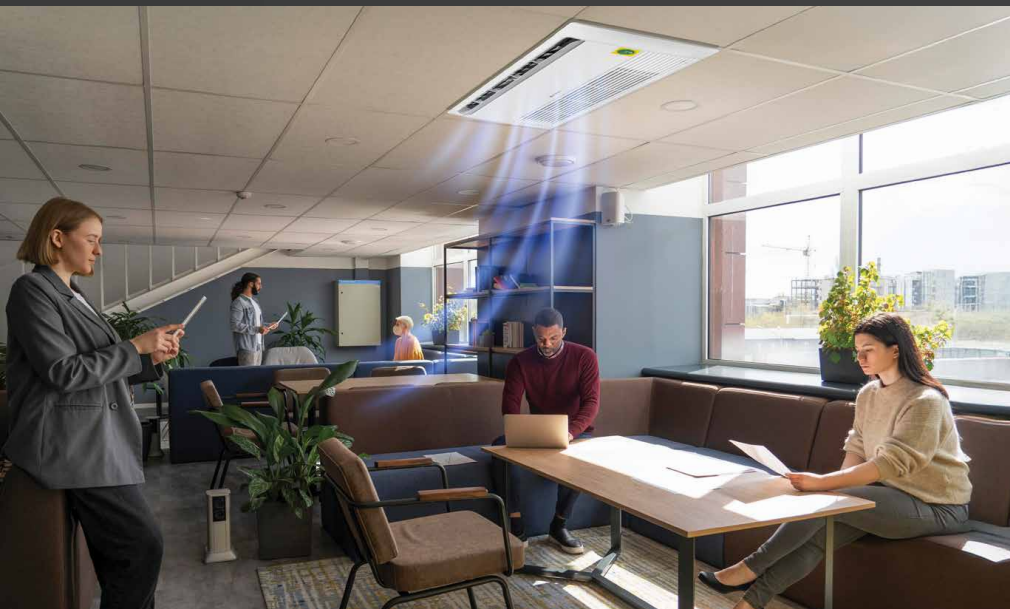


AMSTRAD



POWERFUL COOLING SEAMLESS DESIGN

Upgrade your business environment with our Light Commercial Air Conditioners, designed for modern commercial spaces, where high-efficiency performance meets elegance.



1 WAY CASSETTE

Ideal for commercial environments that demand performance and style.

ULTRA-SLIM COMPACT INDOOR UNIT

Its sleek profile ensures hassle-free installation in narrow ceiling space.



5-IN-1 CONVERTIBLE COOLING

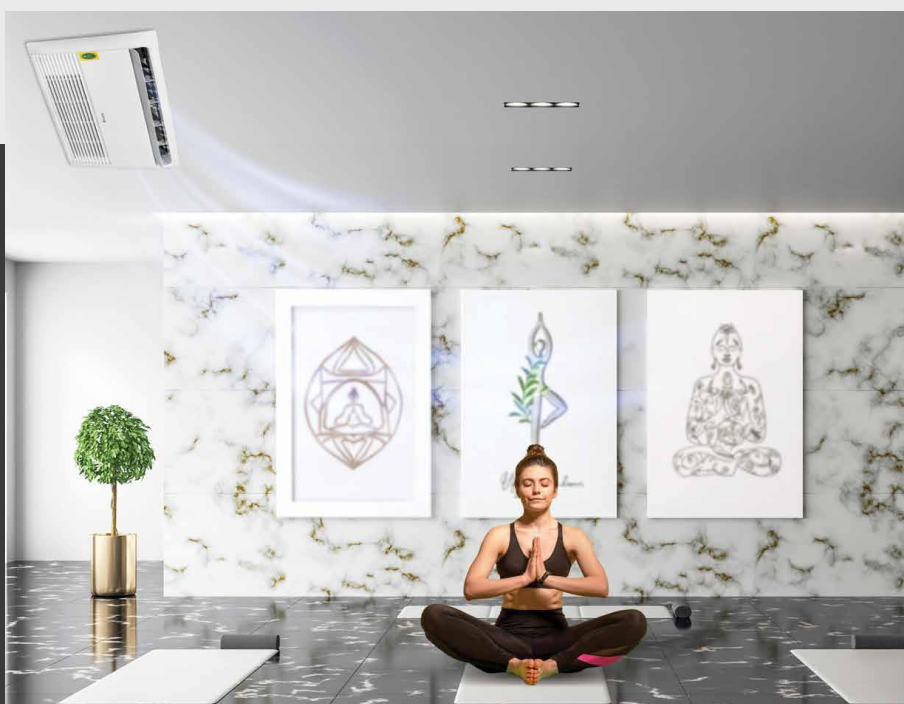
Designed for dynamic environments, the 5-in-1 Convertible feature lets you to customise cooling capacity with precision.

ADVANCED AIRFLOW WITH **FOUR-WAY CONTROL**



Distributes air evenly across multiple directions,
eliminating hotspots and ensuring efficient coverage

INTELLIGENT SENSING. **PERSONALISED COOLING** WITH **iFEEL** TECHNOLOGY

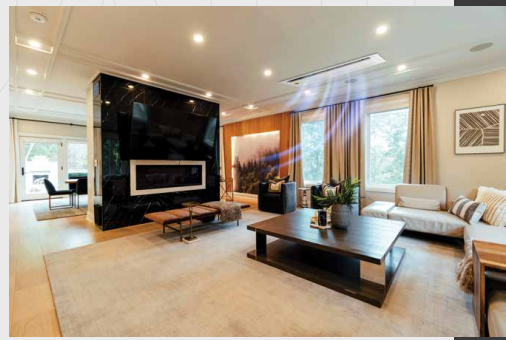


iFeel Technology uses a remote sensor to detect the exact temperature near the user, not just near the unit, delivering truly personalised climate control.



SUPERIOR INDOOR AIR QUALITY

Experience cleaner, fresher air with a powerful purification process and intelligent real-time monitoring.



**DIRECT OR
INDIRECT AIR
—YOUR CHOICE**

Enjoy adjustable wind flow for the perfect comfort setting.

TECHNICAL SPECIFICATIONS OF AMSTRAD ONE-WAY CASSETTE AIR CONDITIONER

MODEL NUMBER			AMS1WC18iA	AMS1WC24iA
TONNAGE			1.5T	2.0T
TYPE OF AC			Inverter	Inverter
POWER SUPPLY		V-Ph-Hz	230V,1Ph, 50Hz	230V,1Ph, 50Hz
CAPACITY (RATED) - MAX / FULL / MIN	COOLING	W	5800 / 5280 / 2150	7500 / 7000 / 3150
POWER INPUT (RATED) - FULL / HALF	COOLING	W	1555 /572	2110/702
ANNUAL POWER CONSUMPTION		kWh	951.29	1223.00
ISEER		W	4.30	4.30
STAR RATING			3 Star	3 Star
MODES			Cool, Dry, Fan, Auto	Cool, Dry, Fan, Auto
CONTROLLER			Remote Control	Remote Control
INDOOR UNIT				
AIRFLOW RATE (HI/MI/LO)		m³/min	15.2/14.6/14.1	15.7/14.9/13.9
AIRFLOW RATE		f³/min (CFM)	536/515/497	554/525/490
FAN MOTOR		Type	BLDC	BLDC
SOUND LEVEL		dB(A)	52	53
MACHINE DIMENSIONS		(W*D*H)	1180 x 450 x 132	1180 x 450 x 132
MACHINE PACKING DIMENSIONS		(W*D*H)	1335 x 440 x 385	1335 x 440 x 385
PANEL DIMENSIONS		(W*D*H)	1420 x 500 x 34	1420 x 500 x 34
PANEL PACKING DIMENSIONS		(W*D*H)	1500 x 562 x 125	1500 x 562 x 125
PIPING CONNECTION (OUTER DIA.)	Liquid	mm (inch)	6	9.52
	Gas	mm (inch)	12	12
	Drain Pipe	mm	25	25
INDOOR MACHINE WEIGHT (NET/GROSS)			12.52/15.92	12.52/15.92
INDOOR PANEL WEIGHT (NET/GROSS)			4.765/7.955	4.765/7.955
OUTDOOR UNIT				
SIZE			20" WIDE	26"
COMPRESSOR TYPE			Rotary	Rotary
REFRIGERANT			R32	R32
REFRIGERANT CHARGE VOLUME		(Kg)	0.67	1.1
HEAT EXCHANGER		Type (Coating)	Bare	Bare
FAN MOTOR		Type	BLDC	BLDC
SOUND LEVEL		dB(A)	62	66
DIMENSIONS		(W*D*H)	780 x 310 x 540	910 x 670 x 320
PACKING DIMENSIONS		(W*D*H)	885 x 417 x 615	1025 x 745 x 433
MACHINE WEIGHT (NET/GROSS)		(Kg)		
MAX. INTERUNIT PIPING LENGTH		(m)	10 Meter	10 Meter
MAX. INSTALLATION LEVEL DIFFERENCE		(m)	5 Meter	5 Meter
PIPING CONNECTION (OUTER DIA.)	Liquid	mm (inch)	6.35(1/4)	9.52(3/8)
	Gas	mm (inch)	12.7(1/2)	12.57(1/2)
PIPING LENGTH	Min / Max	m	5 meter / 15 meter	5 meter / 15 meter
OPERATING AMBIENT TEMP OUTDOOR COOLING (MIN ~ MAX)		°CDB	20°C ~ 55°C	20°C ~ 55°C